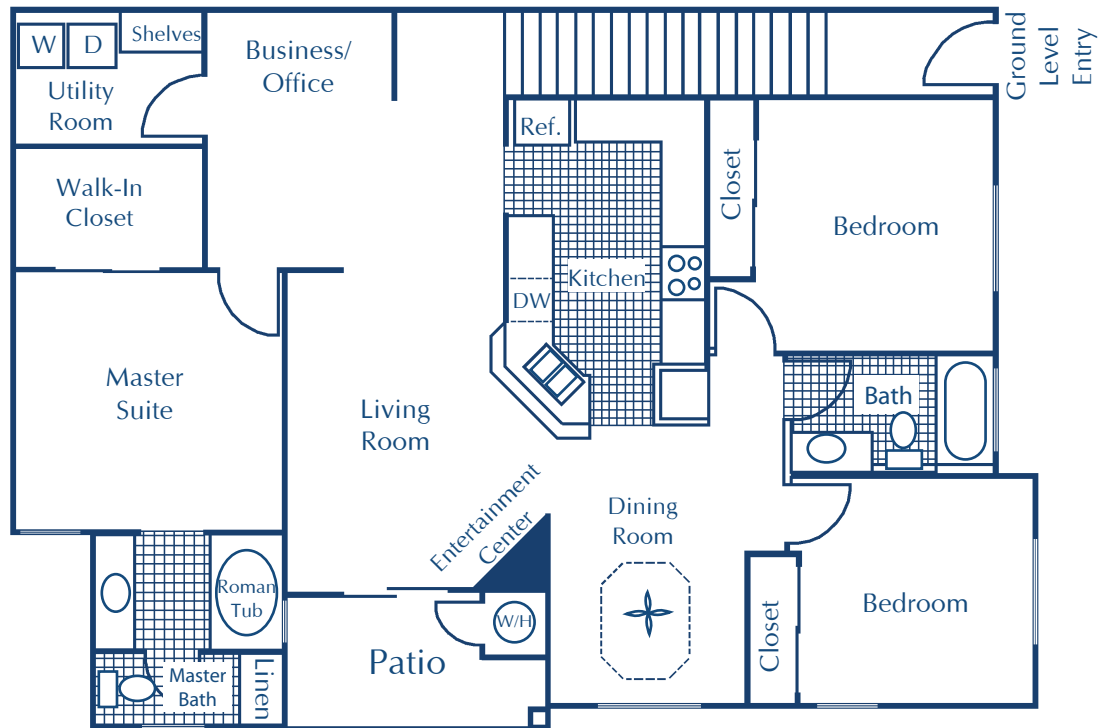


**3 Bedroom 2 Bath
second floor**

1,482 Square Feet

Starting at \$1,370

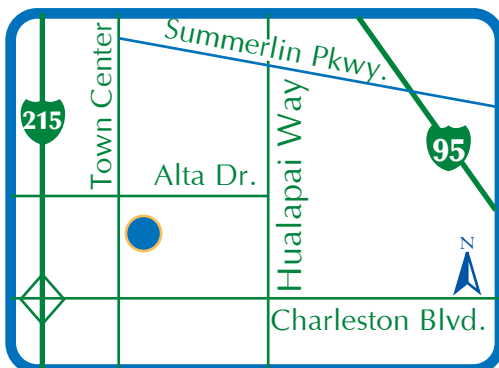


INTERIOR FEATURES

- **DIRECT-ACCESS INTERIOR STAIRWELL ENTRANCE**
- **BUILT-IN ENTERTAINMENT CENTER**
- **FULLY APPOINTED KITCHEN WITH CUSTOM CABINETRY**
- **DECORATIVE CERAMIC TILE KITCHEN, FOYER AND BATHS**
- **FULL-SIZE WASHER AND DRYER**
- **RELAXING ROMAN TUB**
- **SPACIOUS WALK-IN CLOSET**

RECREATIONAL FEATURES

- **BILLIARD ROOM**
- **MEDIA LIBRARY WITH GAME TABLES**
- **FITNESS CENTER**
- **AEROBIC STUDIO**
- **AUTOMATED GATE ACCESS**
- **REFRESHING POOL AND SPA**
- **LIGHTED TENNIS COURT**
- **NATURE WALKING TRAILS**
- **ADJACENT TO SUMMERLIN PARK**



MON-SUN: 8AM-6PM

PRICES SUBJECT TO CHANGE WITHOUT NOTICE

CANYON VILLAS
650 SOUTH TOWN CENTER DRIVE
LAS VEGAS, NV 89144

PHONE: 702.360.2427
FAX: 702.360.2572
WWW.CANYONVILLASAPARTMENTS.COM